



MANUFACTURER'S SPECIFICATIONS

ROLL'FRESH

INSTRUCTIONS FOR INSTALLATION AND USE



TEMPERATURE HOLDING CABINETS



**Read these instructions prior to installation or first-time use of this appliance.
Keep it carefully for future use**

TABLE OF CONTENTS

1. INFORMATION	14
PRIOR TO USE	14
2. INSTALLATION	15
CONNECTIONS	15
3. USE	15
"DIRECT" OPERATION	15
OPERATING IN "DIFFERRED" MODE	15
ALARMS	16
4. CLEANING / MAINTENANCE	16
SUMMARY	16
END OF SERVICE LIFE	17
5. FAULT FINDING	17
DESCRIPTION	17
6. DIAGRAMS	18
WIRING DIAGRAM	18
REFRIGERATION DIAGRAM	18
7. MAINTENANCE	19
8. GUARANTEE	22
9. APENDIX	
TECHNICAL DATA SHEETS	
SPARE PARTS	

PRIOR TO USE.

This appliance is very easy to use. You are, however, advised to read these instructions for use carefully as they contain important information concerning safety and the cleaning instructions.

The manufacturer waives any liability in the event of injury caused to persons or material damage due to non-adherence to the instructions for maintenance and improper use of the appliance. After removing the packaging from the appliance, check it is in perfect condition. If you have any doubts, do not use the appliance and contact your dealer or a qualified technician.

Before using the appliance, check that the current of your mains power supply matches that shown on the data sheet.

Adhere to the following safety instructions when using this appliance :

Warning: to avoid any risk of fire, electrocution or injury, always follow the following main safety instructions when using an electrical appliance.

- Read the instructions for use carefully before using this appliance. Keep these instructions carefully.
- Disconnect the appliance before cleaning it.
- This appliance is not a toy, do not allow children to use this appliance.
- Regularly check the condition of your appliance. Do not use the appliance if it is damaged.
- Do not use the appliance if the power supply cord is damaged.
- Pay special attention to this appliance and follow all the instructions provided in the instructions for use.
- You are advised to install the refrigerated cabinet away from the sun whenever possible.
- If the power supply cord is damaged, it must be replaced by the manufacturer, its after-sales service or a similar qualified person to avoid danger.
- All repairs must be conducted by the after-sales service or similar qualified persons.
- Do not use the application close to flammable materials.
- This appliance is not designed to be used by persons (including children) with limited physical, sensory or mental capacities or persons without experience or knowledge, unless they have benefited from supervision or instructions with regard to the use of the appliance from a person responsible for their safety. Supervise children to ensure they do not play with the appliance.

WARNING :

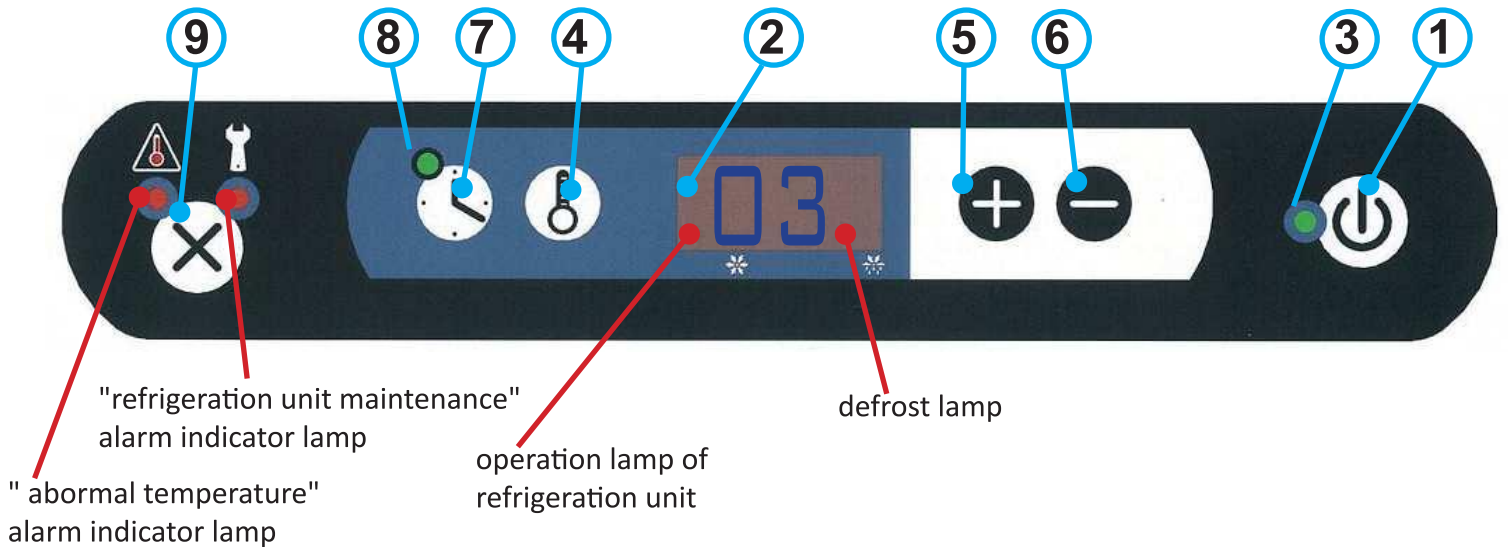
- Keep the ventilation openings in the enclosure of the appliance clear.
- Do not store explosive substances such as aerosols containing flammable propellants in this appliance.
- It is imperative that your appliance is connected to an installation with an electrical network protected by a circuit breaker with adapted differential protection in compliance with the installation rules of NF C 15-100.
- The voltage for this product must be 220-240V, 50Hz.
- Do not damage the refrigeration circuit.
- Let the appliance run empty for 45 minutes prior to use, to save energy.
- Load the cabinet as quickly as possible to limit temperature loss.
- Do not obstruct the grid at the rear of the cabinet providing ventilation to the integrated refrigeration unit.
- Good performance of your cabinet depends on the condenser operating correctly, it is best to have it cleaned by your installer once a year.

2. INSTALLATION.

CONNECTION:

Spiral power supply cord 3G1,5 H05VVF with moulded plug to be connected to a 16 A single-phase current socket protected with a 30mA differential circuit-breaker and an omni-pole cut-out device (switch or circuit-breaker) with a contact opening distance of less than 3mm.

3. USE.



"DIRECT" OPERATION:

- Connect the spiral power supply cord of the cabinet to a current socket.
- Start up the cabinet by prolonged pressing of button **-1-** until the blue leds appear on the readout **-2-**, release the button, the temperature measured by the control probe inside the cabinet appears and lamp **-3-** is on. 30 seconds later the refrigeration unit and ventilation system start up and the unit operation lamp is on.

NB: This time of 30 seconds gives the user the possibility of starting in deferred mode (see next paragraph).

- Pressing button **-4-** once allows for the preset value to be changed.
- Successfully pressing or prolonged pressing of buttons **-5-** ou **-6-** allow for the set value of the cabinet to be changed (between 0°C and 10°C). During this operation the set value displayed in **-2-** flashes. After the setting keys are pressed for the last time, the value chosen will flash again for 13 seconds and then go back to the temperature measured by the control probe. The value displayed on **-2-** stops flashing and the set value is saved.

OPERATING IN "DIFFERRED" MODE:

- Connect the spiral power supply cord of the cabinet to a current socket.
- Start up the cabinet by prolonged pressing of button **-1-** until the blue leds appear on the readout **-2-**, release the button, the temperature measured by the control probe inside the cabinet appears and lamp **-3-** is on.
- Press button **-7-** to enter into deferred mode, the blue leds flash on the readout **-2-** and alternatively display **DIF** and the last deferred starting time programmed.

NB: if you do not press any button, after 13 seconds, the value displayed on **-2-** stops flashing, the temperature measured by the control probe inside the cabinet appears, lamp **-3-** is on and you have come back to direct starting mode.

- Successively pressing buttons **-5-** ou **-6-** allows you to change the deferred starting time (in sets of 30 minutes). After pressing the adjusting keys for the last time, the value chosen will continue to flash for 13 seconds to go back to the temperature measured by the control probe. The value displayed on **-2-** stops flashing, lamp **-8-** is on and the deferred mode is activated.

NB: you can switch from the deferred and direct mode at any time by pressing button **-7-**.

"refrigeration unit maintenance" ALARM

This lamp goes on and the integrated buzzer goes off after 400 hours of operation of the unit. Pressing button **-9-** once will deactivate the mode. Provide for action from an engineer to clean the condenser.

"abnormal temperature" ALARM

This lamp goes on and the integrated buzzer goes off in different situations (eg: door incorrectly closed, incorrect operation of unit, etc). Pressing button **-9-** once will deactivate the mode.

IMPORTANT !! Deactivating the alarm will not overcome any dysfunction of the unit. Provide for action from an engineer.

NB: this "abnormal temperature" mode is only activated after the first-time control of the cabinet.

4. CLEANING / MAINTENANCE

SUMMARY:

In order to maintain the finish of the stainless steel as much as possible and avoid oxidation, you are strongly advised to clean the appliance regularly. Use cleaning product compatible with the stainless steel surfaces. Follow with the prescribed dosages. Wear suitable gloves during these cleaning operations.

IMPORTANT !!

- Disconnect the appliance from the electricity supply before carrying out any cleaning or maintenance jobs.
- Do not use a water spray or steam on the appliance.

RECOMMENDATIONS:

- Do not scrape the layer of frost off the evaporator as this could damage it.
- Clean the door seal with clean water and dry carefully.
- The correct performance of the appliance depends on the correct operation of the condenser, remember to clean him once a year.

As per the standard BPA36-720

Recommended cleaning products:

- All bleach-free detergents (powder detergent, alkaline detergents and liquid soaps).
- Water (hot or cold).
- Cleaning product recommended for stainless surfaces.

Products to be avoided at all costs:

- Bleach and chlorine derivatives.
- Hydrochloric acid: used for tiles, it has quick and destructive effects on stainless steel.
- Abrasive iron oxide powders.
- White wine vinegar.

TASK	PERFORMED BY
AT END OF SERVICE	
Wash the inside of the cabinet after every use to prevent soiling due to hardening of any food that has fallen or been sprayed against the walls. Use a sponge with soapy water or products specially designed for stainless steel. Rinse with clean water. Wipe with a cotton cloth.	User
EVERY WEEK	
EXTERNAL COATING: You are advised to use a neutral cleaning product. Rinse thoroughly. All chlorinated products are strictly prohibited. Do not spray with water in all cases. Do not use abrasive products.	User
EVERY YEAR	
Check the safety devices, the electrical and refrigerant components.	Technician

"Reconditioning" cleaning:

If the stainless steel becomes dull, stained or rusted by chlorine products, or has a lot of scale built up: use a suitable strong acid based product, for instance, phosphoric acid or nitric acid.

TOURNUS EQUIPEMENT proposes a passivation product (**reference 284 500**). Apply the product to the areas that are deteriorated, allow to react for 15 minutes and rinse thoroughly with water. Always rub in the original brushed direction.

END OF SERVICE LIFE:

The crossed out bin affixed to the equipment means that this equipment is subject to disposal management and recycling in compliance with the directive 2002/96/EC applicable to waste electrical and electronic equipment.

When your equipment arrives at the end of its service life, you must contact your dealer to find out the waste collection and recycling measures we have set up as a member of the SY-NEG).

Pour la reprise de cet équipement électrique professionnel en fin de vie, contactez :

- **RECYSTEM-PRO** au
• 33 (0) 825 800 600
ou
• synergdeee@recystempro.com
► ou le **CONSTRUCTEUR**



Article L. 543-10-2 et articles
R. 543-172 à R. 543-206 du
code de l'environnement

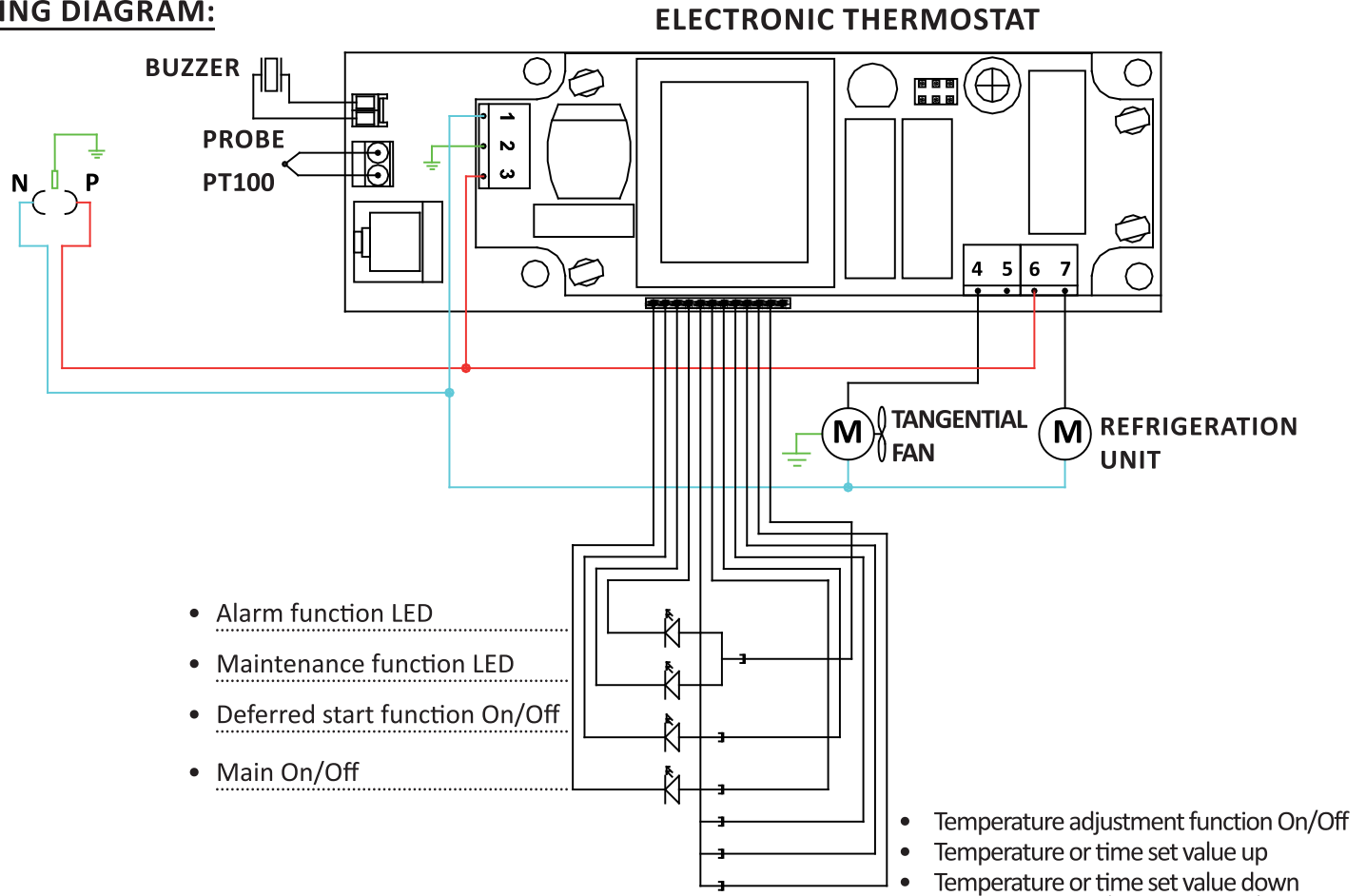
Electronic products not covered by a selective sorting system are potentially dangerous for the environment. All our equipment complies with the RoHS Directive (2002/95/EC).

5. FAULT FINDING**DESCRIPTION:**

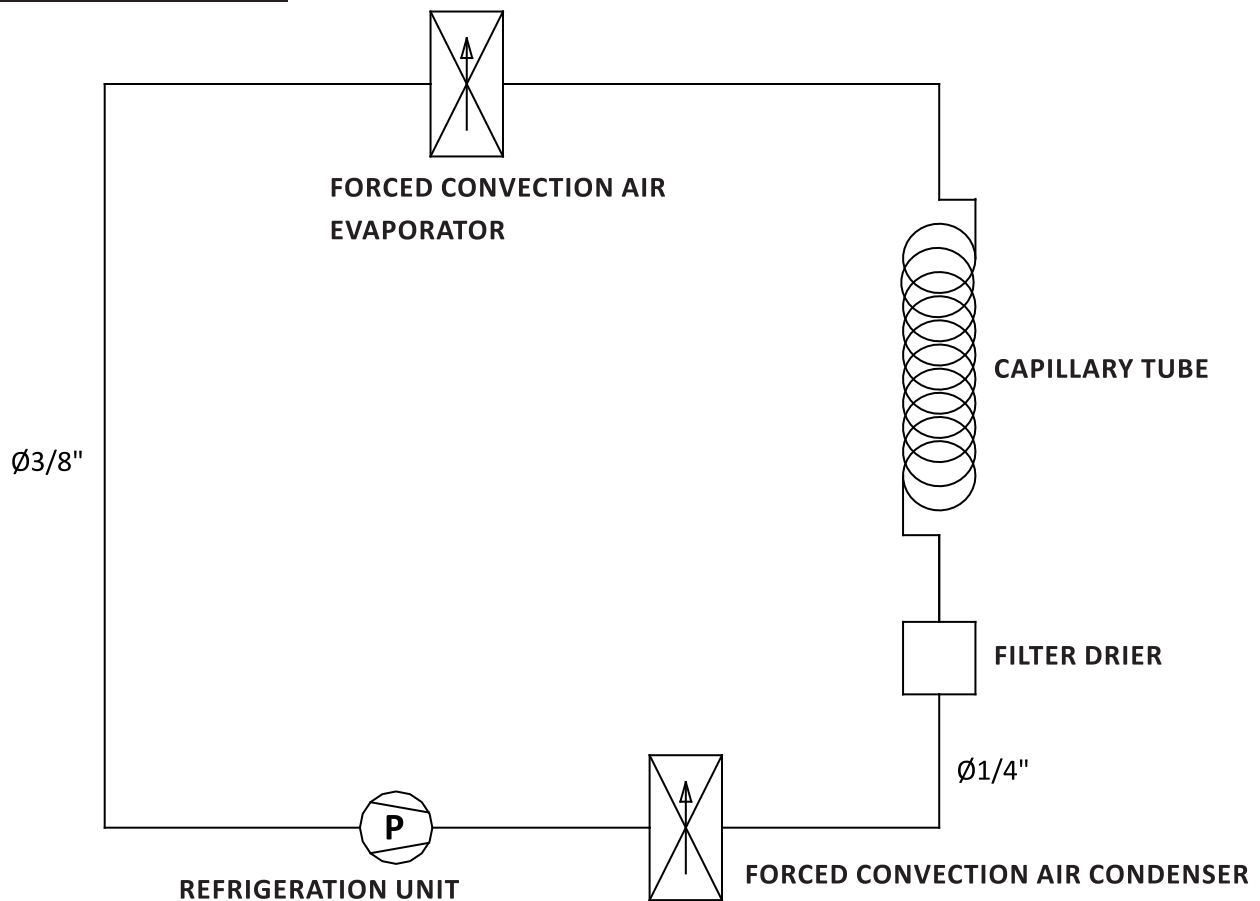
PROBLEMS	CAUSES	REMEDIES
The appliance does not start	<ul style="list-style-type: none"> Control panel of Power cut off Appliance not connected Other 	<ul style="list-style-type: none"> Press the button On/Off (-1-) Check the power line Check the connection to the mains Contact your dealer's technical assistance
The control panel does not go on	<ul style="list-style-type: none"> Thermostat out of order 	<ul style="list-style-type: none"> Contact your dealer's technical assistance
No ventilation	<ul style="list-style-type: none"> Relay of thermostat out of operation Motor ventilation out of order 	<ul style="list-style-type: none"> Contact your dealer's technical assistance Contact your dealer's technical assistance
No refrigeration	<ul style="list-style-type: none"> Relay of thermostat out of operation Refrigeration unit out of order gas leak 	<ul style="list-style-type: none"> Contact your dealer's technical assistance Contact your dealer's technical assistance Contact your dealer's technical assistance
display "- -" on screen (-2-)	<ul style="list-style-type: none"> Probe cut off 	<ul style="list-style-type: none"> Contact your dealer's technical assistance
Triggering the "abormal température" alarm (see page 5)	<ul style="list-style-type: none"> Door not properly shut Refrigeration unit out of order gas leak 	<ul style="list-style-type: none"> Verify Contact your dealer's technical assistance Contact your dealer's technical assistance
Triggering the "refrigeration unit maintenance" alarm (see page 5)	<ul style="list-style-type: none"> 400h of operation of the unit 	<ul style="list-style-type: none"> Deactivating the alarm (-9-) and provide for action from an engineer to clean the condenser

6. DIAGRAMS

WIRING DIAGRAM:



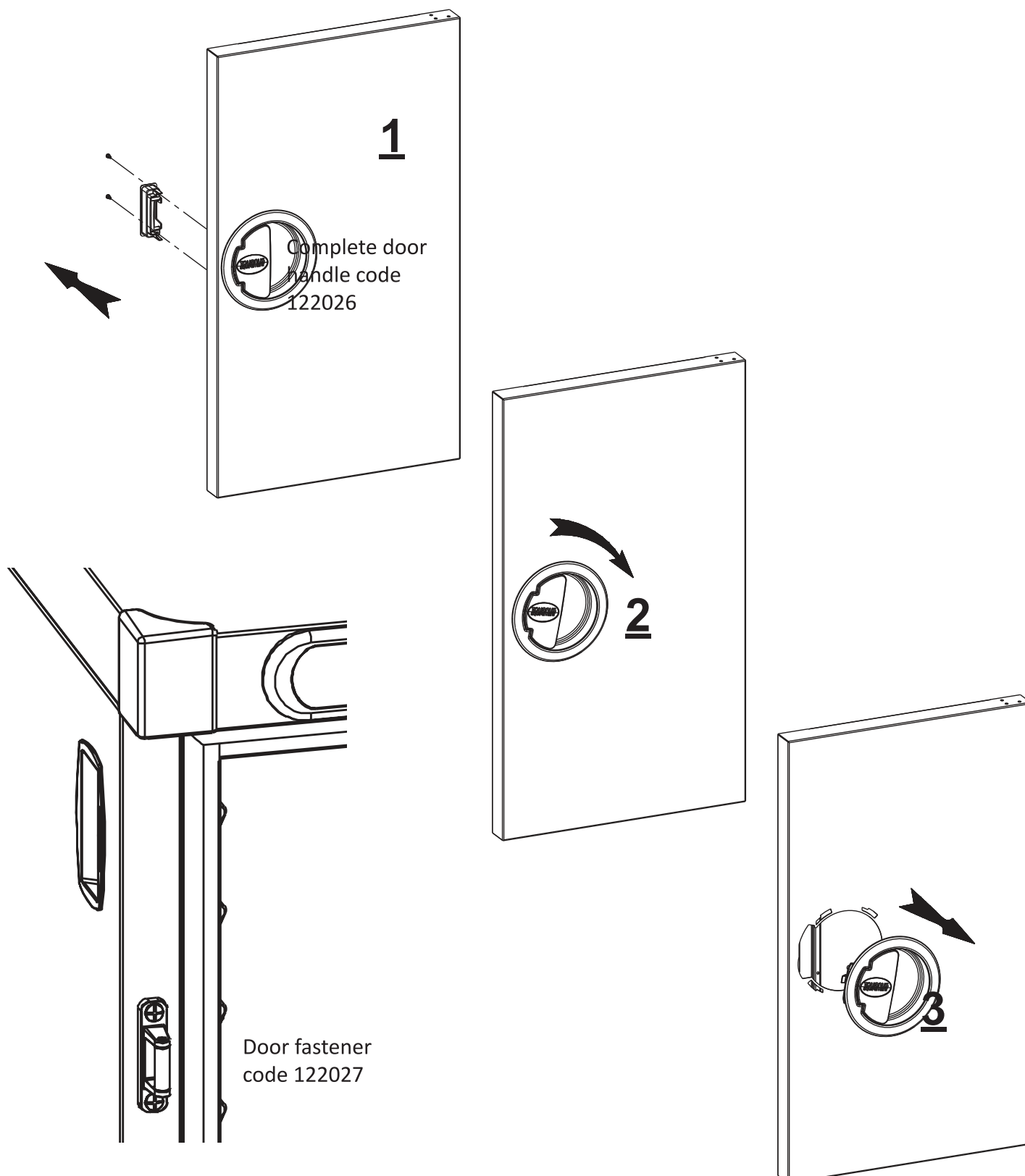
REFRIGERATION DIAGRAM:

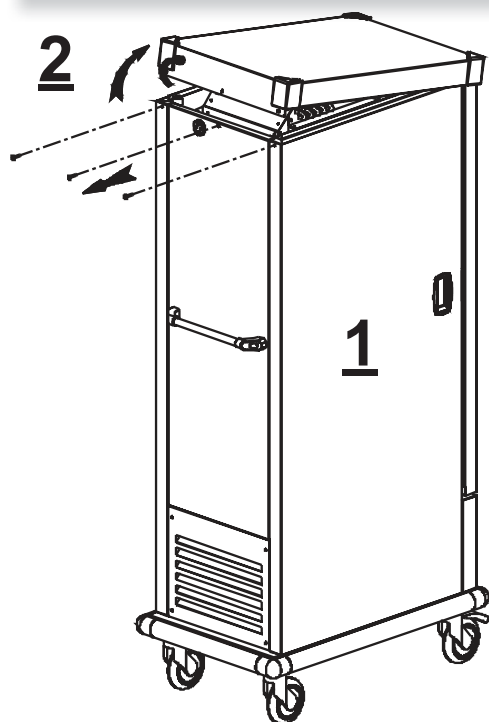


7. MAINTENANCE

CHANGING THE DOOR HANDLE:

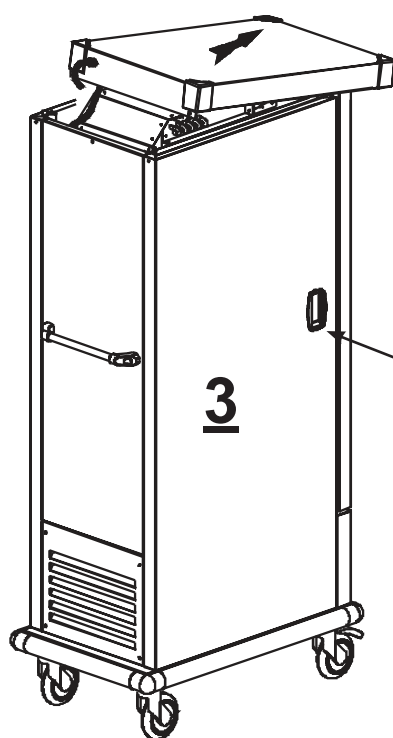
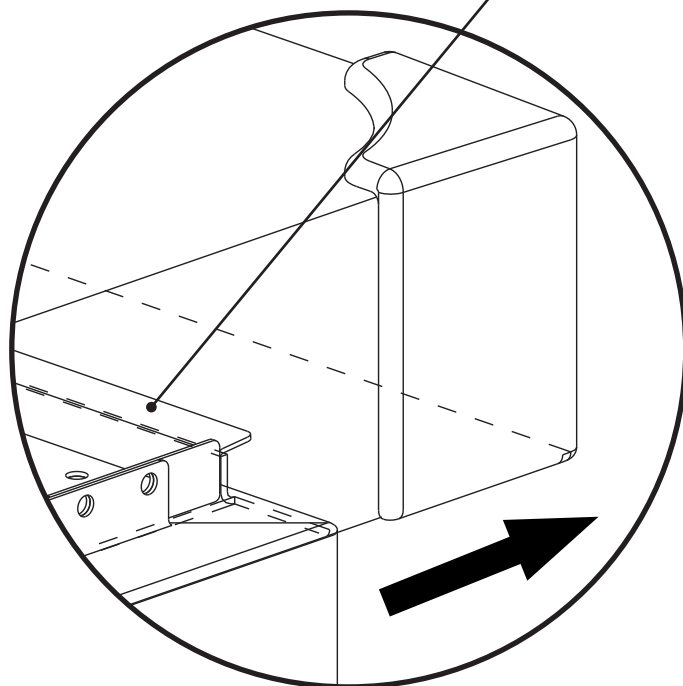
- **STEP N°1:** Remove the 2 holding screws from the inside part of the handle and remove it completely from its housing.
- **STEP N°2:** Swivel the outside part of the handle by approximately 10° clockwise to free the holding pins.
- **STEP N°3:** Pull towards you to free the door completely.
- **STEP N°4:** Put back the different components in reverse order to dismantling.





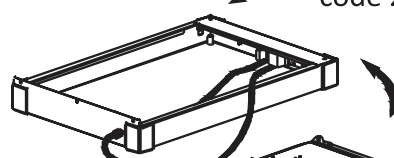
REMOVE THE UPPER COVER:

- **STEP N°1:** Remove the 3 holding screws from the top cover + one located in front, on the upper door hinge.
- **STEP N°2:** Swivel the cover to be able to slide it forwards.
- **STEP N°3:** Slide the cover forwards to free it from the cabinet holding return device.

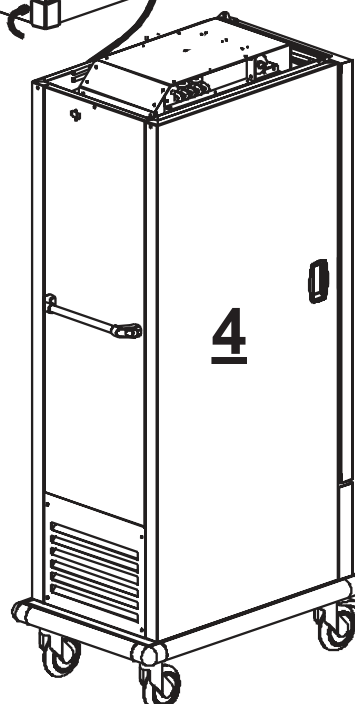


Black side clip-type handle
code 262080

ABS cabinet top corner, grey
code 262062

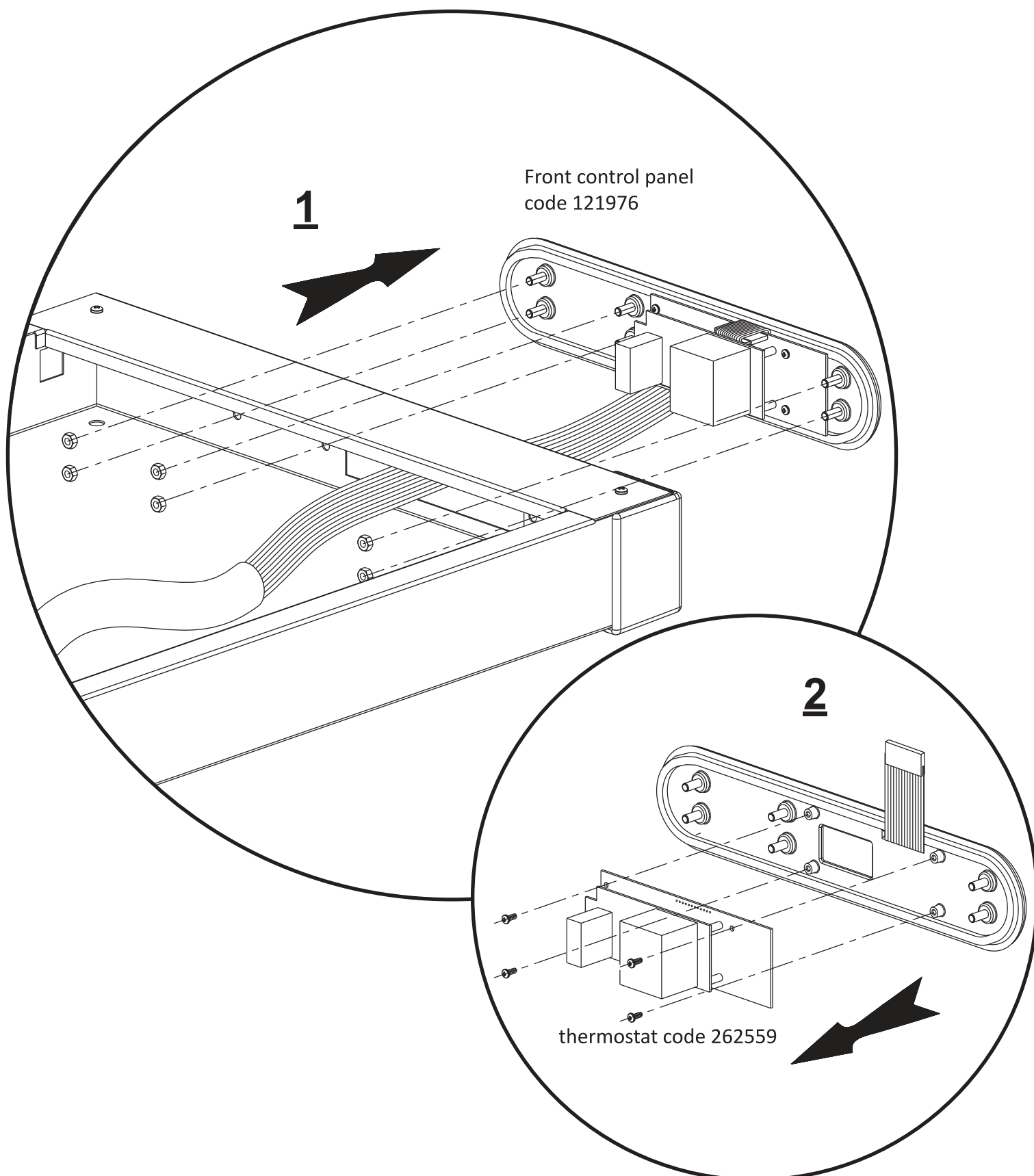


- **STEP N°4:** Fold back the top cover to access the electrical wiring, the control card or safety thermostat.
- **STEP N°5:** Put back the different components in reverse order to dismantling (**be careful not to catch the cables**).



TAKE DOWN THE ELECTRONIC THERMOSTAT:

- **STEP N°1:** Remove the 6 nuts with a spanner of 8 and pull the front control panel and wire bundle **(be careful not to damage the flat cable and cables on the edge of the plate metal)**.
- **STEP N°2:** Disconnect the flat cable between the front panel and the electronic thermostat.
- **STEP N°3:** Remove the 4 holding screws from the control card on the grey ABS carrier.
- **STEP N°4:** Disconnect the electric cables and change the thermostat.
- **STEP N°5:** Put back the different components in reverse order to dismantling.



8. GUARANTEE

- The guarantee only applies to normal use in strict compliance with the recommendations shown in our technical and user manuals.
- It shall not be valid in the event where the recommended periodical maintenance or inspections are not carried out by approved technicians.
- In order to benefit from our guarantee, our appliance must not undergo any alteration or repair made with non-original parts and not approved by our departments.
- The maintenance frequency relates to normal conditions of use. In the event of more intensive conditions, certain operations are required at more frequent intervals of time.
- If the power supply cord is damaged, it must be replaced by the manufacturer, its after-sales service or a similar qualified person to avoid danger.

WARNING

- Damage caused by connection of our appliances to a mains source not in compliance with the data plate (voltage, reversal of phase/neutral) as well as non-adherence to the order of the phases (important for three-phase motors, rotation direction, cylinders, etc) are not covered by this guarantee.
- You are therefore advised to connect the equipment only when the voltage is available and controlled at a source perpendicular to it.